

PhotoEye Accumulation Live Roller Conveyor (PE)



Feature-for-feature, no other conveyor can match Automotion's Zero Pressure PhotoEye Accumulation Conveyor. There is no minimum weight restriction and it will convey items weighing up to 250 pounds while running smoothly, quietly, and stress free.

Automotion's custom designed photo-eye/solenoid module locally monitors and controls each zone. Multi-color LED's provide a constant status of the photoeye and the solenoid. A built-in time delay increases throughput by preventing intermittent slowing of the product load. The photo-eye can detect a wide variety of products including very light product and product with uneven bottoms. It can also be skewed to sense totes or other irregular shaped product that leave gaps when accumulated. It releases in singulation mode, but can support slug discharge applications without requiring air or electrical modifications. Any accumulation photo-eye can be used to extract and send line condition information to the pro-grammable controller for use in system control.



Mechanical Characteristics

Bed Section

6" Deep x 1-3/8" Flange x 10 Gauge frame in 12" increments between 72" and 144". Accumulation zones are 24" or 36".

Galvanized Rollers

1-7/8" Diameter, 16 Gauge, with 7/16" hex axle.

Drives

6", 8", or 10" Center Drives and 6" or 8" End Drives. Lagged pulley with automatic spring take-up on center drive. 8" wide Type 6 Friction x Friction belting. 3/4 HP to 5 HP 230V-460V/3-Phase/60Hz. "C" face TEFC motor with reducer. Speed range is 60-320 FPM.

Terminal End

4" or 6" Diameter plain pulley.

PhotoEye/Solenoid Sensor Assembly

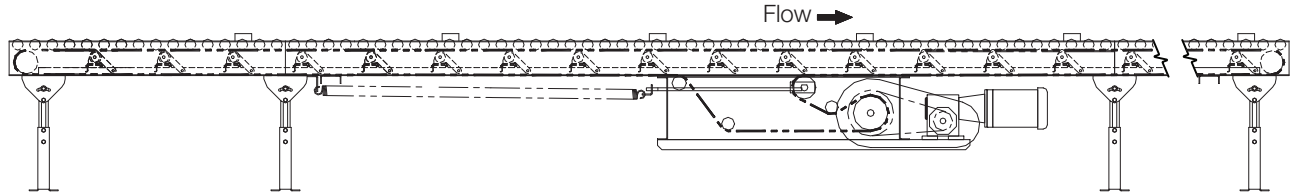
24 VDC photo-eye/solenoid module with polarized retro-reflective eye.

Axle Isolators

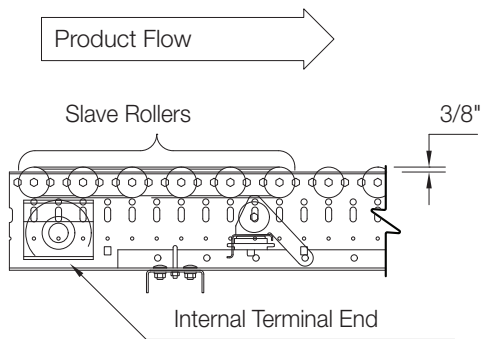
Specially designed conductive plastic insert isolates carrying roller axles from the conveyor frame to reduce noise and prevent wear.

Technical Detail

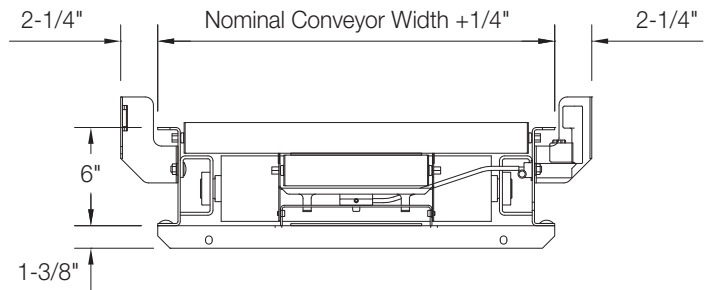
Elevation View



Elevation View



Section View



Specifications

Typical Applications

- Transportation
- Zero Pressure Accumulation
- Staging
- Diverging & Merging

Live Load Capacity

Up to 100 lbs/ft. depending on width, roller centers, supports, etc.

Nominal Widths

18", 24", 30" and 36"

Between Rail Widths

15-1/2", 21-1/2", 27-1/2"
and 33-1/2"

Carrying Roller Centers

2", 3" and 4"

Lifter Roller Centers

6" and 12"

Options

- Take-Ups, Guard Rails, and Supports
- High Speed Rollers (std. over 180 FPM).
- Cog Drive Belt
- 24" and 36" Accumulation Zones
- Pop-Out Carrying Rollers
- Urethane Coated Rollers
- Machine Crown Pulleys
- Terminal End Covers
- Pop-Out roller at Terminal End
- Automatic & Manual Air Brakes
- Slug Release
- Powder Coat or Galvanized Finish