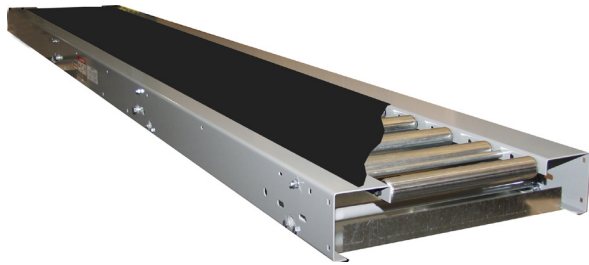
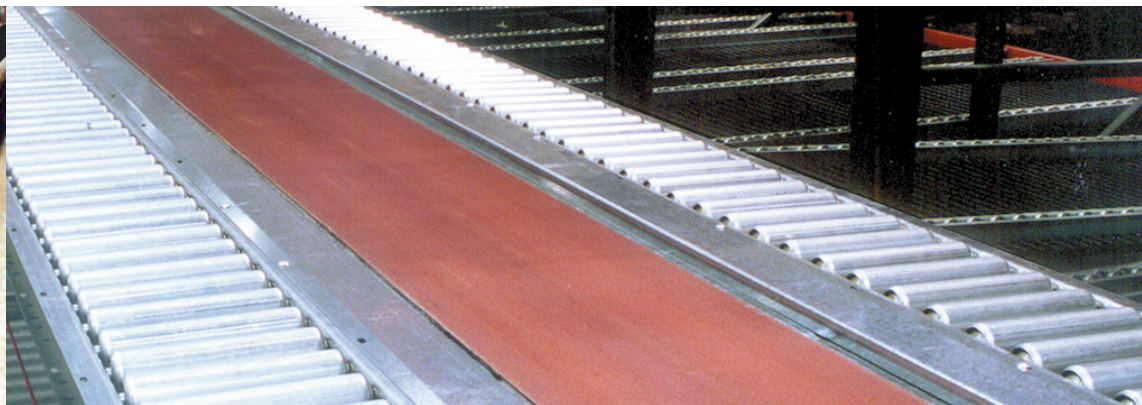


Roller Bed Belt Conveyor (RB)



All of the advantages and benefits that make a big difference in durability and performance are built into each facet of Automotion's pre-engineered conveyor components.

Automotion's Roller Bed Belt Conveyor make it easy to transport a wide variety in shapes and sizes, up to 100 pounds per foot, to specified destination points in level surface applications as well as in incline and decline applications. Automotion's Roller Bed Belt Conveyors are well supported units that are stable, quiet running, versatile and economical. These units feature extra-strength, non-exposed axle design, a variety of drives and take-up options, built-in box channel design for safety and appearance, and are available in multiple widths to meet your requirements. Automotion's Roller Bed Belt Conveyors use C-Faced motors which provide adjustability and variability via reducers to meet speed requirements. All mechanical operations run smoothly and quietly.



Mechanical Characteristics

Bed Section

5-1/4" D X 12 Gauge frame in 6" increments between 12" and 144".

Galvanized Carrying and Belt Return Rollers

1-7/8" D, 16 Gauge, carrying rollers with 7/16" hex axle. Return rollers on nominal 6' centers, carrying rollers on nominal 6" centers.

Drives

6", 8", or 10" Center Drives and 6" or 8" End Drives. Lagged pulley with automatic spring take-up on center drive. 3/4 HP to 5HP 230V460V/ 3-Phase/60Hz. "C" face TEFC motor reducer. Speed range is 60-320 FPM.

Terminal End

4", 5", or 6" Diameter plain pulley with pop-out roller.

Belting

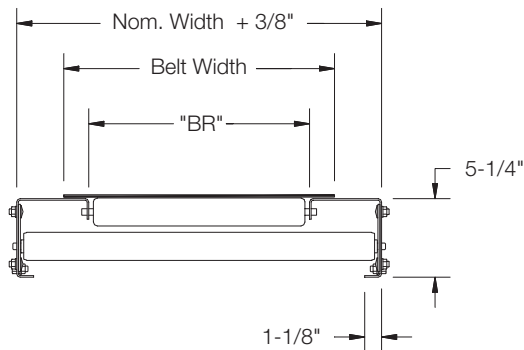
Type 1 Friction Surface X Bare Surface.

Axle Isolators

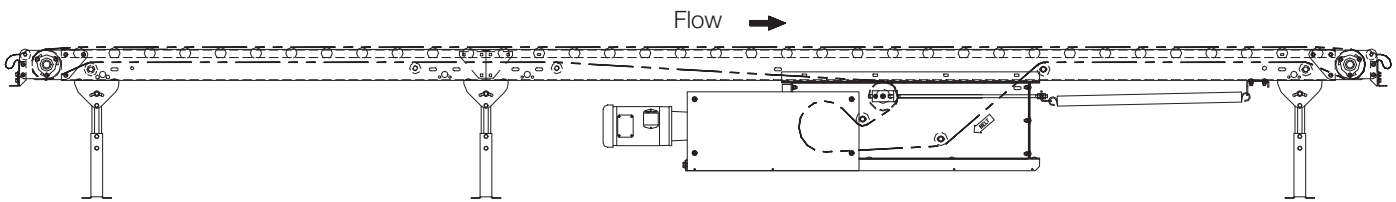
Specially designed conductive plastic insert isolates return roller axles from the conveyor frame to reduce noise and prevent wear.

Technical Details

Section View



Elevation View



Specifications

Typical Applications

- Transportation
- Elevation Changes
- Sortation
- Trash Conveyor
- Pick Belts

Live Load Capacity

Up to 130 lbs/ft. depending on width, roller centers, supports, etc.

Nominal Widths

18", 24", 30", 36", 42" and 48"

Standard Belt Widths

14", 20", 24", 30", 36" and 42"

Carrying Roller Centers

6" and 9"

Options

- Take-Ups, Guard Rails, and Supports
- High Speed Rollers (std. over 180 FPM)
- Power Take-Off Units
- Drop Kit
- Bottom Covers
- Terminal End Covers
- Pop-Out Roller at Terminal End
- Punched for Top Mount Guard Rail
- Synchronous Belt Drive
- Cog Belt Drive
- Powder Coat or Galvanized Finish