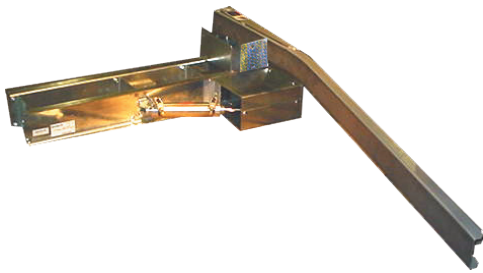


AutoSort 1 Trap Arm Sorter Medium Speed



Automotion's Trap Arm Sorter can be used as an integral sortation component in almost any conveyor system. Automotion's high speed induction conveyor strategically gaps and places the product onto the sortation belt conveyor. The trap arm diverter fires to the fully divert position prior to the carton reaching the arm. This diverter will change the orientation of the product by 90 degrees from the sortation conveyor through the take-away.

The trap arm sorter provides flexibility and effectiveness in handling and separating a wide range of packaged goods and materials. The arm is air operated and can be controlled manually or remotely to meet your specific sortation requirements.

The medium speed trap arm sort stations are designed to be used with Automotion's standard belt conveyor fitted with slip top belting, but can also be used for live roller divert applications.



Mechanical Characteristics

Nominal Conveyor Widths
24", 30" and 36"

Sort Rate Capacity

Up to 20 cartons per minute on Sortation Belt Conveyor running 100 to 250 feet per minute. Sort rate is dependent upon carton size and weight and system design.

Carton Weight Capacity

Up to 75 pounds, depending on sort rate and system design.

Compatible Conveyor

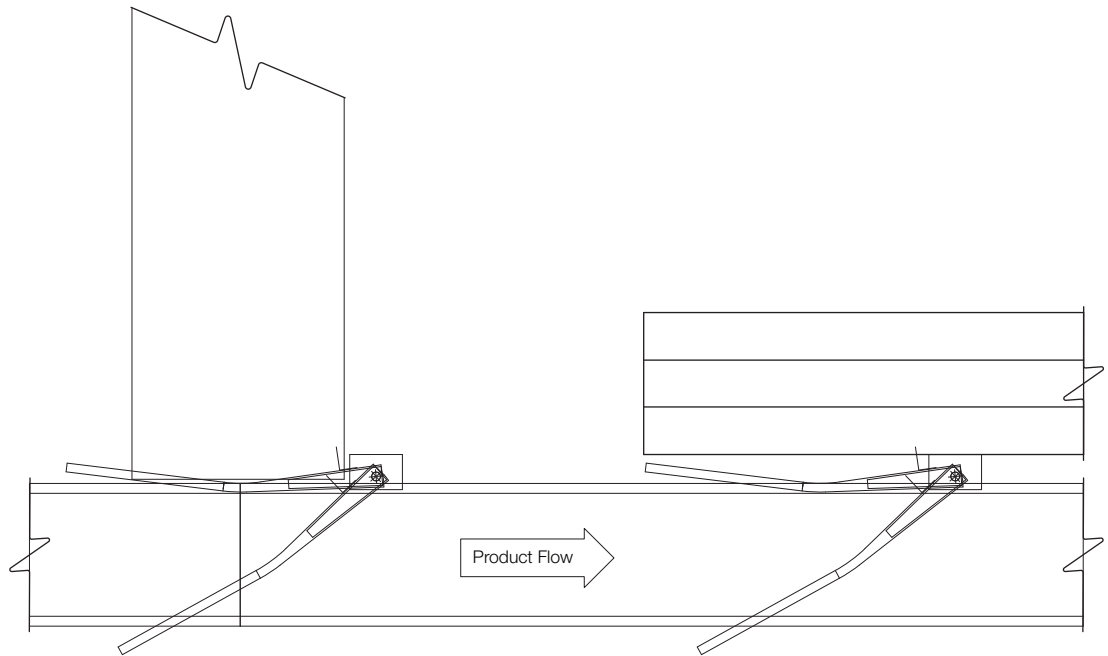
Automotion high speed slick top belt sortation conveyor.

Air Requirements

Nominal operating pressure is 80 psi.

Technical Detail

Plan View



Specifications

Control Method

Can be controlled manually or remotely to meet your specific sortation requirements.

Typical Applications

- Shipping Sortation
- Receiving Sortation

Sortation Belt Conveyor

Live Load Capacity

Up to 100 lbs/ft. depending on width, roller centers, supports, etc.