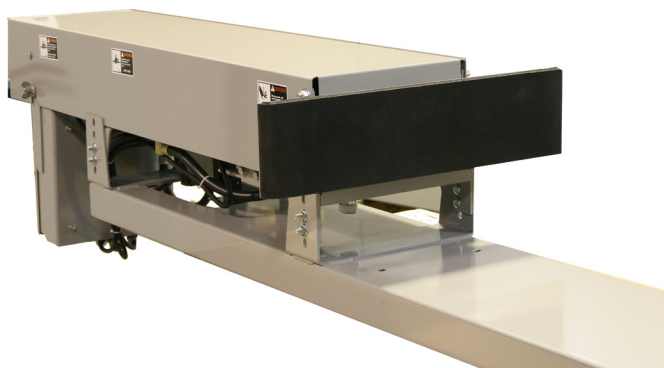


AutoSort 2 Pusher Sorter Medium Speed



Automotion's medium speed Pusher Sorter can be used as an integral sortation component in almost any conveyor system. Our high speed induction conveyor strategically gaps and places the product onto the sortation belt conveyor. The divert mechanism fires to the fully divert position when the carton passes in front of the pusher. It can divert to a conveyor that is parallel or perpendicular to the transferring conveyor. When diverting to a conveyor that is perpendicular to the transferring conveyor the product orientation will be changed by 90 degrees.

The air operated pusher sorter provides flexibility and effectiveness in handling and separating a wide range of packaged goods and materials. It is ideal for use in areas where linear space is limited.

The medium speed pusher is designed to be used with Wynright's standard belt conveyor fitted with slip top belt-ing, but can also be used for live roller divert applications.



Mechanical Characteristics

Nominal Conveyor Widths
24", 30" and 36"

Sort Rate Capacity

Up to 40 cartons per minute on Sortation Belt Conveyor running up to 250 feet per minute. Sort rate is dependent upon carton size and weight and system design.

Carton Weight Capacity

Up to 75 pounds, depending on sort rate and system design.

Compatible Conveyor

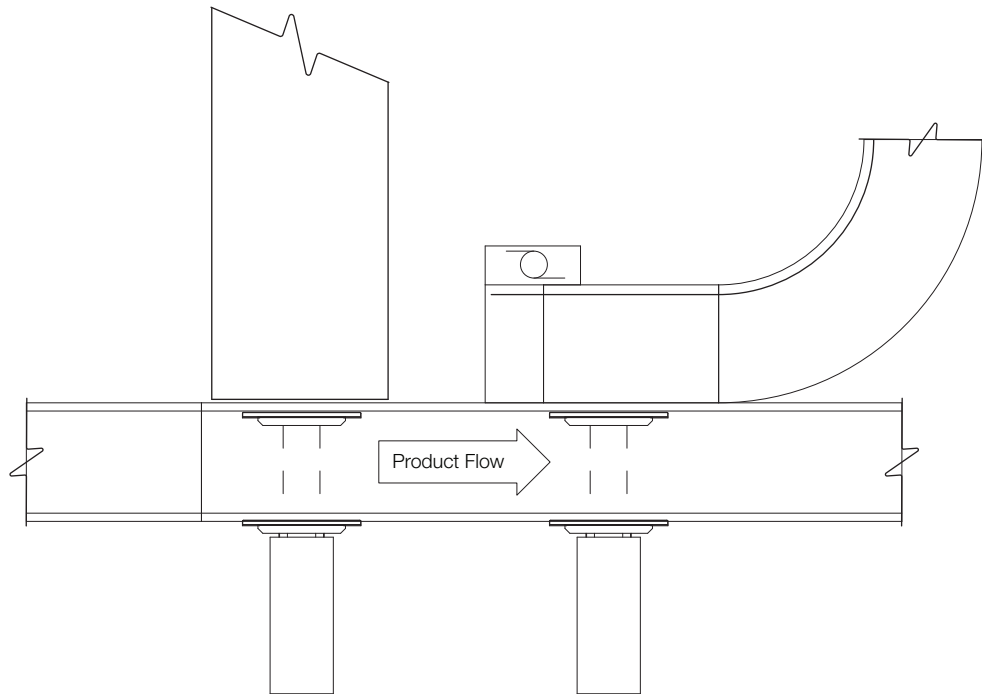
Automotion high speed slick top belt sortation conveyor.

Air Requirements

Nominal operating pressure is 80 psi.

Technical Detail

Plan View



Specifications

Control Method

Can be controlled manually or remotely to meet your specific sortation requirements.

Typical Applications

- Shipping Sortation
- Receiving Sortation

Sortation Belt Conveyor

Live Load Capacity

Up to 100 lbs/ft. depending on width, roller centers, supports, etc.