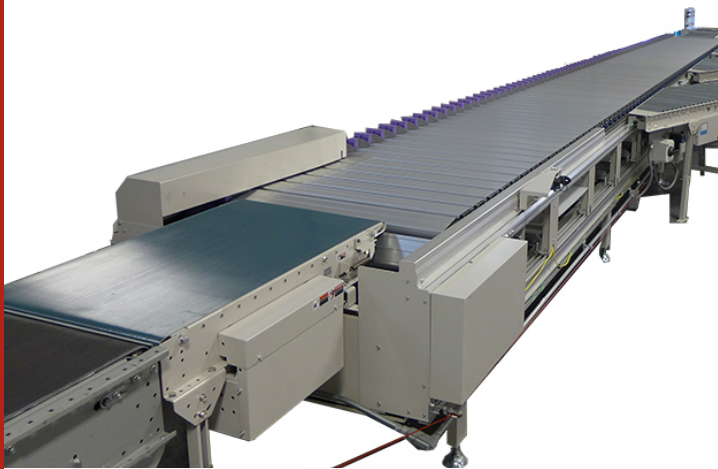


AS-30 Sliding Shoe Sorter High Speed

Ideally suited for heavy duty applications, Wynright's Sliding Shoe Sorter is a high speed, positive divert sorter designed to accurately track and gently sort cartons of various sizes and configurations. A wide range of packaged product, in virtually any mix are quickly and easily transported to their assigned divert stations.

Product to be sorted is gently diverted by pushers designed with energy absorbing elastomer cushions for greater control and gentler handling. The pushers operate from inside the carrying tube extrusion, allowing for free, un-obstructed operation even when the carrying surface becomes contaminated. The AS-30 divert stations can be infinitely adjusted for precise positioning. Precision bearing wheels on all load components greatly reduce drive train load pull requirements and chain stretch.



Mechanical Characteristics

- Extruded Aluminum Cross Tubes
- Energy Absorbing Molded Pushers with Snap-on / Pop-off shoes
- Precision Bearing Wheels and Low Friction Lubricated Plastics

Nominal Conveyor Widths:

600 mm (23.6")
800 mm (31.5")
900 mm (35.5")

Sort Rate Capacity:

Single side sort rate up to 200+ CPM at speeds up to 600 feet per minute. Double side sort rate up to 130 CPM at speeds up to 450 feet per minute. Sort rate is dependent upon carton size & weight, required gap between products, and system design.

Carton Weight Capacity:

Up to 100 pounds, depending on sort rate and system design.

Carrying Chain:

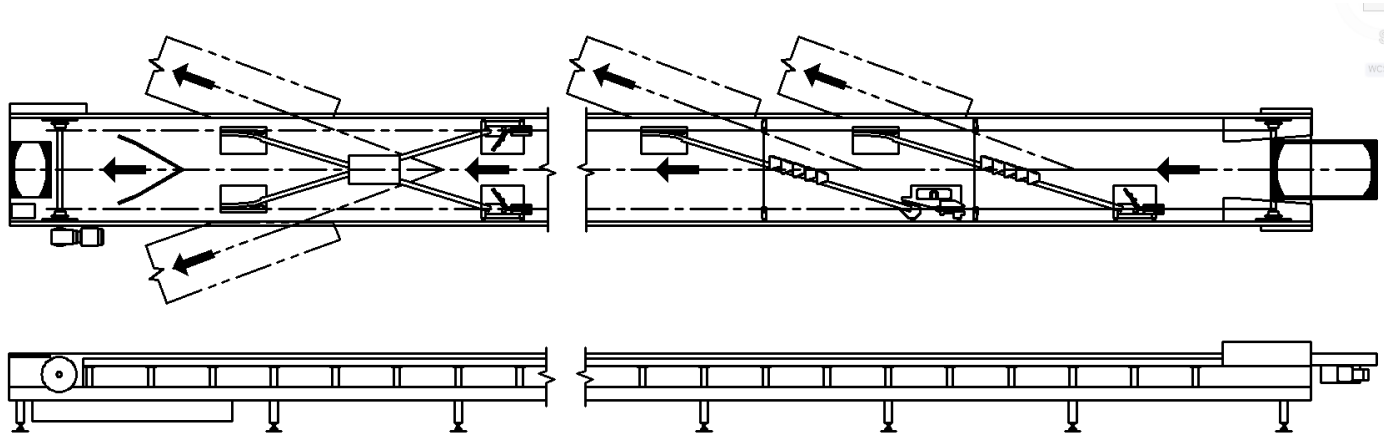
RC80 pitch O-ring sealed chain. Urethane coated precision load wheels.

Easy Access Side Frame:

Plexiglass incorporated into side frame allows quick inspection and easy access.

Technical Details

Plan View



Specifications

Typical Applications

- Shipping Sortation
- Receiving Sortation

Live Load Capacity

100 lbs/CTN max, 2 lbs/CTN min

Sorter Widths

1250 mm (49.2")
1450 mm (57.08")
1550 mm (61.02")

Minimum Elevation

39 inches

Nominal Divert Switch Angles

30°, 20° and 17° dependent upon sort conveyor speed and system design.

Divert Switch

- Magnetic divert switches provide fast, consistent, quiet diverts with a rated life of 50M cycles.
- Pneumatic divert switches provide fast, quiet, and consistent diverts.

Divert Configurations

Single side divert, right or left side. Dual side divert station having directly opposing divert lanes. Number of divert stations and minimum station centers limited by carton size, distance between diverts, angle of divert switch track, and conveyor pull requirements.

Pop-Off / Snap-On Shoes

Shoes pop-off to avoid damage in the event of a jam and snap back into place.

Precision Construction

Benefit from the best of both worlds - Japanese design and quality. Built in the USA!

Plexiglass Side Frames

See-through plexiglass panels incorporated into the side frame throughout the length of the sorter enable operators and maintenance personnel to inspect interior components without dismantling. Panels are easily removed for maintenance access.

Options

- Full length bottom covers (Standard design includes 5500 mm bottom covers at each end).

Features

- Slide on the inside pusher
- O-ring sealed chain to increase chain life and reduce chain oil mess
- Pop-off / Snap-on shoes
- Pneumatic divert switch and a magnetic divert switch with no moving parts
- 30°, 20° and 17° divert track angles to control the carton for optimum diverting

- See-through plexiglass side panels for viewing the inside of the sorter without dismantling
- Interior debris trays to keep outside dust, dirt, and debris from getting inside the machine
- Sound insulated bottom covers are standard in the tail section and drive section
- Personnel guards on walk-aisle side of sorter to keep people away from moving parts
- Optional braking motor to quickly stop the machine
- Optional ID control system that reduces the required carton gap and increases sorter throughput
- Optional bottom covers for the intermediate bed sections

