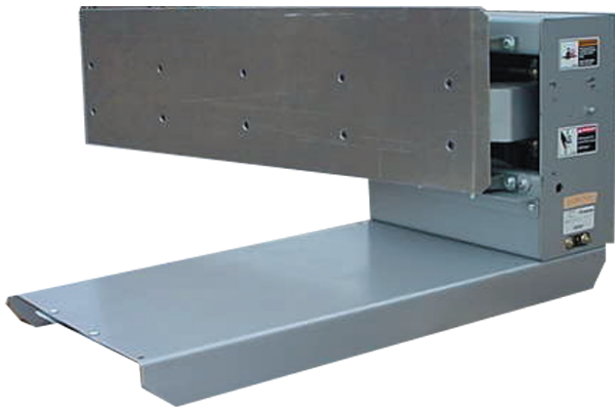


# AutoSort 4 Flat Face Arm Sorter High Speed



Automation's High Speed Flat Face Arm Sorter can be used as an integral sortation component in almost any conveyor system. Our high speed induction conveyor strategically gaps and places the product onto the sortation belt conveyor. The High Speed Flat Face Arm Diverter is precision timed to swing out and make contact with the product to be sorted at a controlled rate of acceleration to provide a gentle sweeping divert action to a powered or non-powered takeaway conveyor.

The High Speed Flat Face Arm Sorter provides flexibility and effectiveness in handling and separating a wide range of packaged goods and materials. The arm is air operated and can be controlled manually or remotely to meet your specific sortation requirements.

The High Speed Flat Face Arm Sort Stations are designed to be used with Automation's standard belt conveyor fitted with slip top belting.



## Mechanical Characteristics

**Nominal Conveyor Widths**  
24", 30" and 36"

### Sort Rate Capacity

Up to 60 Cartons per minute on Sortation Belt Conveyor running up to 450 feet per minute. Sort rate is dependent upon carton size and weight and system design.

### Carton Weight Capacity

Up to 75 pounds, depending on sort rate and system design.

### Compatible Conveyor

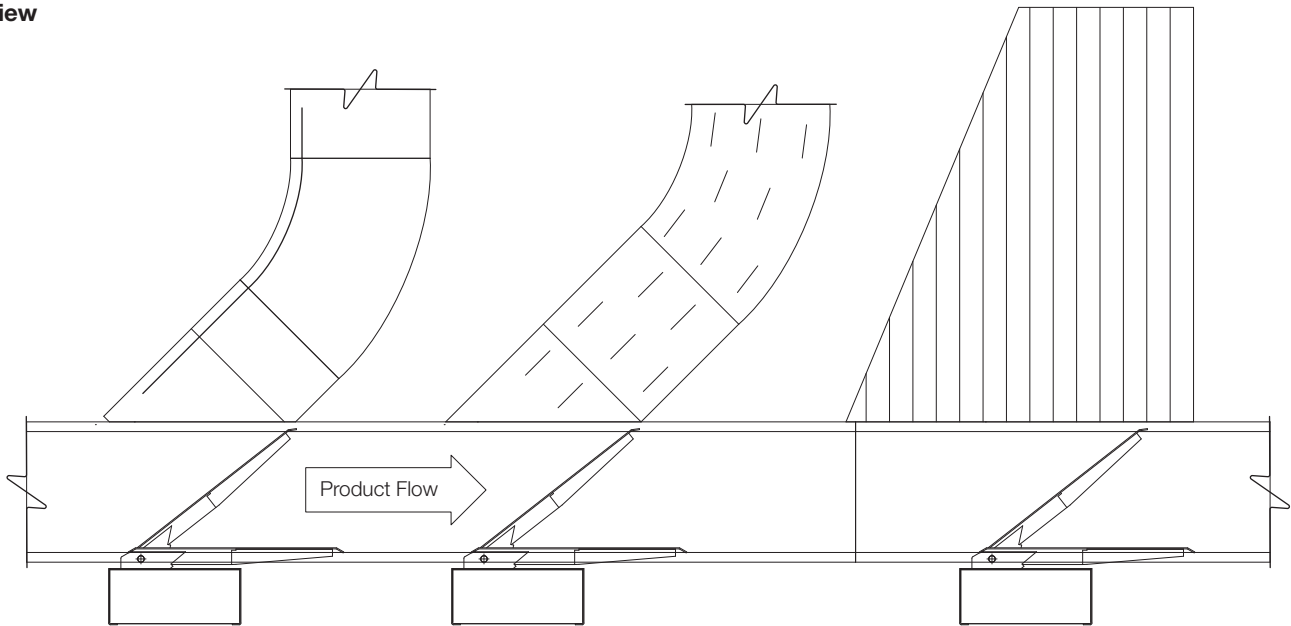
Automation high speed slick top belt sortation conveyor.

### Air Requirements

Nominal operating pressure is 80 psi.

**Technical Detail**

**Plan View**



**Specifications**

**Control Method**

Can be controlled manually or remotely to meet your specific sortation requirements.

**Typical Applications**

- Shipping Sortation
- Receiving Sortation

**Sortation Belt Conveyor**

**Live Load Capacity**

Up to 100 lbs/ft. depending on width, roller centers, supports, etc.