

## V-Belt Driven Live Roller Conveyor (VB)



Automation's V-Belt Driven Conveyor incorporate a modular bolt together design enabling numerous job specific assemblies to be configured from a handful of standard modular components. These motor driven or slave driven units are available in a full array of curve, straight and junction configurations to satisfy your specific curve, merge, or divert layout requirements. Automation's standard curve offering features true taper rollers in the arced section of the curve so cartons negotiate turns smoothly and quietly without changing carton orientation. This V-Belt conveyor will convey product loads up to 125 lbs./ft.

Automation's V-Belt Live Roller Conveyor was designed with ease-of-maintenance in mind. In addition to durable galvanized rollers, these economical and easy-to-install units feature specially designed snub driveshafts that allows belts to be replaced without disassembling the conveyor.



### Mechanical Characteristics

#### Bed Section

10" Deep x 1-3/8" Flange x 10 Gauge frame with 29-7/8" inside radius.

#### Galvanized Rollers

**Carrying:** 1-7/8" Diameter, 16 Gauge carrying roller with 7/16" hex axle.

**Tapered Carrying:** 1-7/8" Diameter (small end), tapered carrying roller with 7/16" hex axle.

#### Drives

Slave driven module or motor driven module with belt take-up. 3/4 HP to 1-1/2 HP 230V-460V/3-Phase/60Hz. "C" face TEFC motor with reducer. Speed range is 70-600 FPM.

#### Belt

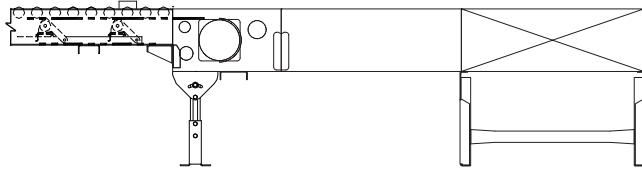
"B" Section V-Belt.

#### Axle Isolators

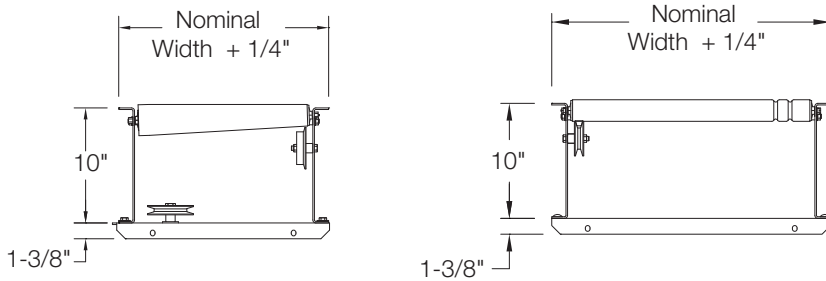
Specially designed conductive plastic insert isolates carrying roller axles from the conveyor frame to reduce noise and prevent wear.

## Technical Detail

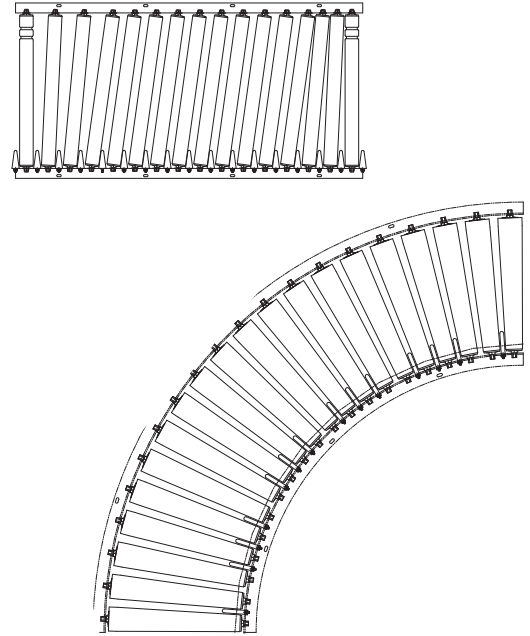
### Elevation View



### Section View



### Plan View



## Specifications

### Typical Applications

- Transportation
- Transfer (junctions for merge and divert applications)
- Alignment

### Live Load Capacity

Up to 100 lbs/ft. depending on width, roller centers, supports, etc.

### Standard Curve Offering

30°, 45°, 60°, 90°, and 180°

### Tight Radius Curve Offering

90° and 180°

### Standard Junction Offering

30° and 45°

### Standard Nominal Widths

18", 24", 30", 36" and 42"

### Tight Radius Nominal Widths

18", 24", and 30"  
(Inside Radius 13-1/2")

### Between Rail Widths

15-1/2", 21-1/2", 27-1/2"  
and 33-1/2"

### Carrying Roller Centers

2" and 3"

### Options

- Guard Rails and Supports
- High Speed Rollers (std. over 180 FPM).
- Internal Slave or Motorized Drive
- Cog Belt Drive
- Power Take-Off Units
- Machine Crown Pulleys
- Terminal End Covers
- Powder Coat or Galvanized Finish